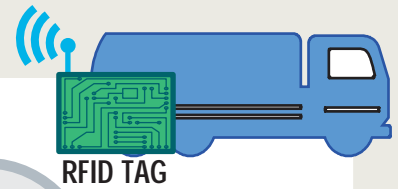
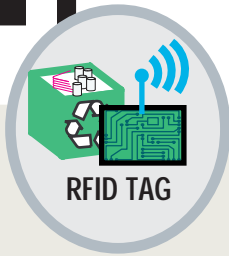


MUNICIPAL SOLID WASTE TRACKING

WITH 

1 Each waste box is equipped with RFID TAG

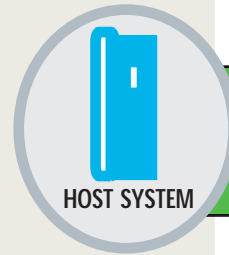


RFID TAG

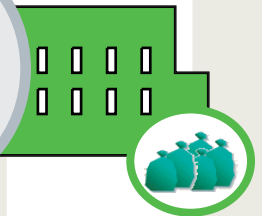


RFID READER

2 Carrier equipped with RFID TAG could read data from waste box with RFID READER



HOST SYSTEM



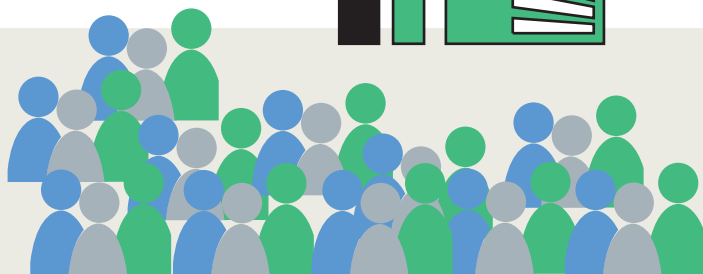
3 Processes data are loaded into the HOST SYSTEM at the recycling, recovering, treatment or disposal facility

4 Reported data are transmitted to municipal authorities, through the MET-R-I-S platform



CITY HALL

6 Municipality provides citizens with updated data and citizens access data at any time, through the MET-R-I-S platform



5 Municipal authorities send the required data to other agencies, through the MET-R-I-S platform

